




D E N T A L  
**MASTERY**  
CE COURSE OFFERINGS

*RGS III*

STEVENSON  
DENTAL SOLUTIONS



 570 E Arrow Hwy Units A & B  
San Dimas, CA 91773

 (310) 868-1838

 [info@stevensondentalsolutions.com](mailto:info@stevensondentalsolutions.com)

 [stevensondentalsolutions.com](http://stevensondentalsolutions.com)

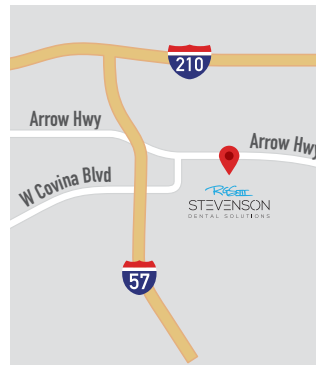


**Your  
Journey  
Starts  
Here**

## FACILITY

All of our courses are conducted at our learning facility in San Dimas, California, a very safe and clean community, located only 15 minutes west of Ontario International Airport. Our hands-on lab is spacious and features a state-of-the-art dental operator. Our Center has study areas, and a full service kitchen and dining area.

**570 E Arrow Hwy Units A & B, San Dimas, CA 91773**



# Richard G. Stevenson III

## DDS, FAGD, FACD, ABOD

Director of Education, Stevenson Dental Solutions

Dr. Stevenson earned his Doctor of Dental Surgery degree in 1986 from UCLA, a certificate in Advanced Education in General Dentistry in 2001 from UCLA, and obtained Board Certification from the American Board of Operative Dentistry in 2008. His work as a mentor of five Richard V. Tucker Study Clubs, combined with teaching at the pre-doctoral and post-doctoral levels at UCLA have forged his commitment to excellence and passing on the knowledge to others. His laudatory history with teaching has garnered him Teacher of the Year Awards from numerous classes at UCLA including the prestigious ADA Golden Apple Award for Teaching. He is a graduate of the famed Kois Center, and has been a Faculty in both the UCLA Aesthetic Continuum, and Implant Continuum. He maintains a private practice in West Los Angeles in the area of Multidisciplinary Complex Restorative Rehabilitation including Esthetics and Implant Dentistry. He started SDS in 2015 to "fill the gap" between traditional education and real-world clinical dentistry for practicing dentists. The adage, "what you don't know, you don't know" clearly emphasizes this fact. Dr. S believes that great dentistry requires a life-long commitment to excellence.

RGS III





# CE COURSES

CONTINUING EDUCATION  
for **DENTISTS**

# MASTERPATH COURSES

CONTINUING EDUCATION  
for DENTISTS

You have graduated from dental school and started to practice, but you soon realize that there are challenges you face which are difficult to solve. Perhaps you've been in practice for several years and have found yourself bored, or in a rut. Maybe it's time to reinvent yourself. There are gaps and missing pieces in your overall knowledge. Something is missing. You are a good dentist but you want to be a great dentist. Our MasterPath Courses are focused on hands-on techniques and are designed for dentists seeking skills enhancement training to up their game in private practice, military and academic settings. We feature two 2-day and five 3-day courses ranging from Clinical Practical Occlusion to Implant Restorations, which may be taken in any order. Most of our participants find these courses so helpful that they complete the entire series. All course equipment and supplies are always included in your course fee - all you need to bring are your loupes. Our courses are at least 75% hands-on, so be prepared to work!

**7 core courses that will change the way you practice for life...**

Course

01

## Clinical Occlusion

Diagnosis, Deprogrammers, Equilibrationm

3 days

Course

02

## Posterior Composite Restorations

Pulpal Protection, Layering, Longevity

2 days

Course

03

## Anterior Composite Restorations

Diastema, Bonding, Class Vs

2 days

Course

04

## Posterior Ceramic Restorations

Inlays, Onlays, Crowns, Cementation

3 days

Course

05

## Anterior Ceramic Restorations

Veneers, Vonlays, 3/4 and Full Crowns

3 days

Course

06

## Implant-Restorative Connections

Abutments, Locators, Impressions, Provisionals

3 days

Course

07

## Gold Restorations: Cast & Foil

Inlays, Onlays, The Tucker Technique, Foil

3 days

# Clinical Occlusion: DX Diamond

During this course, you will be introduced to the “Diagnostic Diamond” - a formula-based system to integrate patient data in a clear and organized manner leading to a risk-based sequential treatment plan. The hands-on portion of the course will take dentists through the steps to take accurate esthetically derived facebow records, the indications for and delivery of deprogrammers, centric relations records, equilibration, and occlusal guards. After this course, dentists will be able to better understand the comprehensive diagnostic process and formulate predictable and affordable treatment plans for their patients with options, and the risks and benefits of each. This is a practical course geared for general dentists looking to take their dentistry to “the next level” in patient care, with foresight, compassion, ethics and integrity.

## Topics

- Data gathering and metrics - to protect you and the patient
- The ultimate and efficient cancer-screening exam
- Clinical photography - keeping it super simple
- The latest in Periodontal and Endodontic Diagnosis
- Caries management - non-surgical and surgical
- Understanding structural compromise
- Formulating the elusive functional diagnosis
- Analogue and Digital Facebow records
- Easy and repeatable CR records - we can all do this
- When will MIP work and when it will not?
- Design in esthetic dentistry - it's much more than just teeth
- Treating the gummy smile - multidisciplinary approaches
- The prognostic matrix - let the patient know their options
- Restoring OVD - it all begins with one simple truth
- Equilibration - it's narrow indications and it's simple implementation
- Deprogrammers - they work when you understand them





# Posterior Composite Restorations

This two-day lecture and hands-on course will review the latest advancements in the broad realm of posterior composite restorations. The course has been designed to provide the clinician with a deep understanding of the entire restorative process from materials science and adhesion to the placement and adjustment of the finest composite restorations possible. The importance of isolation and techniques to simplify this important step will be practiced. When to perform pulp capping and with what materials are critical to the overall success and patient satisfaction. Understanding how to mitigate polymerization shrinkage via 3D layering can be efficient and fun to do! Contouring, finishing and polishing the final restoration with occlusion and longevity in mind will ensure better results. Both the new practitioner and the experienced will find something valuable in this course.

## Topics

- Step-by-step protocol
- Isolation techniques
- Adhesive options - what generation is best?
- Liners and bases and pulp capping materials - how to use them for predictable results
- Matrix systems - are they all the same?
- Light curing units and techniques
- Preparation designs
- Margin Elevation technique
- Composite materials
- Bulk fill vs incremental layering
- The "snow-plow" and the "wall and lobe" techniques
- Complex situations - deep lesions, and cusp coverage
- The Biomimetic Approach
- Polishing systems
- Occlusal adjustment
- Reducing post-operative sensitivity
- Efficiency, limitations, indications



# Anterior Composite Restorations

This two-day lecture and hands-on course will review the latest advancements in the broad realm of anterior composite restorations. The course has been designed to provide the clinician with a deep understanding of the entire restorative process from materials science and adhesion to the placement and adjustment of the finest anterior esthetic composite restorations possible. Function (Dynamic Occlusion) plays as important a role as shade matching and contours in this challenging arena of direct restoration. The course will teach you the most effective methods to close diastema, complete chairside veneers and seamless restorations in the esthetic zone. Using advanced layering techniques is not just limited to artistic geniuses - you can accomplish amazing results with just a few repeatable techniques. Both the new practitioner and the experienced will find something valuable in this intensive course.

## Topics

- Step-by-step protocol
- Shade matching
- Diagnostic wax-ups and putty guides
- Layering techniques
- Imperceptible class III, IV, and V restorations
- Direct facial composite veneers ("bonding")
- Diastema closure
- Preparation designs - angled bevels and starburst bevels
- Composite materials
- What are the Best Systems
- Complex situations - rotated teeth, discolored teeth
- Using tints and opaques
- Troubleshooting
- Polishing systems
- Occlusal adjustment for chewing pathways
- Efficiency, limitations, indications



# Posterior Ceramic Restorations

This three-day course provides dentists with a comprehensive review of Posterior Ceramic Restorations. The topics will include diagnosis, indications and contraindications, dental materials, isolation techniques, bases and liners, preparation designs, impressioning, provisionalization, laboratory communication, cements, adhesion, cementation, finishing and polishing, occlusal adjustment, and post-operative instructions and care, variations, and troubleshooting. We will stress the adherence of proven well-documented techniques based on clinical studies, and will take the participant through numerous scenarios of preparation design, temporization techniques, and cementation. Each participant will prepare at least 6 teeth during the course on a typodont and one natural tooth, which will be scanned and manufactured with CAD/CAM technology, and then cemented, finished and polished on the tooth which was prepared.

## Topics

- Diagnosis and treatment planning for ceramics
- Isolation techniques
- Assessing the tooth structure for the most conservative option
- Liners and Block-outs
- Supragingival preps via margin elevation
- Impression techniques
- Variations in preparation design: inlays, onlays, vonlays, crowners,
- 3/4 Crowns, ACCs
- Laboratory communication
- Material choices: what to use when and where
- Cementation procedures
- Immediate dentin sealing (IDS)
- Cements: choices and shades
- Silanating techniques
- Adjusting occlusion and polishing
- CAD cam scanning and design
- Milling, staining and glazing techniques



# Anterior Ceramic Restorations

This three-day lecture and hands-on course will review the latest advancements in the broad realm of anterior ceramic veneer, crown, partial coverage “crowners”, and “vonlays” restorations. The course has been designed to provide the clinician with a deep understanding of the entire restorative process from materials science and adhesion to the placement and adjustment of the finest anterior ceramic veneer restorations possible. Function (Dynamic Occlusion) plays as important a role as Esthetics in this challenging arena of indirect restoration. A decision tree for which material to use in each case will be presented which is sure to improve your understanding and execution of both monolithic and bi-layered restorations of lithium disilicate, zirconia and feldspathic ceramics. Both the new practitioner and the experienced will find something valuable in this intensive course. A live patient case will be performed during the course.

## Topics

- Step-by-step protocol
- Shade matching
- Diagnostic wax-ups and putty guides
- Lab communication
- Diagnostic wax-up, and esthetic mock-up
- Sophisticated veneer provisionals - blueprints for success
- Preparation designs - facial, incised butt and lingual wrap
- Ceramic material choices
- Complex situations - rotated teeth, discolored teeth
- Try-in pastes
- Using resin cements of various shades
- Troubleshooting
- Polishing systems
- Occlusal adjustment for chewing pathways
- Efficiency, limitations, indications
- Live patient cases (start to finish)

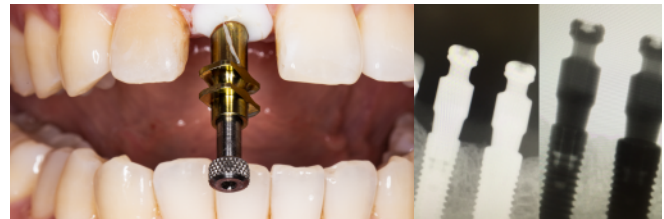


# Implant Restorative Connections

The implant has integrated, and your patient is anxiously awaiting the final prosthesis - what's next? What materials will you use which give you the desired esthetics and functional durability? Should you use a stock abutment? A custom abutment? Screw retained? Cement Retained? How much torque is required? What implant is that!? Where to get parts? This three-day lecture and hands-on course will include the latest scientific evidence with respect to improving clinical outcomes with your implant restorations. Each participant will experience numerous hands-on techniques for impressioning, torquing abutments, cementation and access hole restoration. At the completion of this course, the restorative dentist will gain significant knowledge and improved clinical skills in the challenging arena of implant restorations.

## Topics

- Planning the case with the result in mind
- Screw vs Cement-retained - when, where, and how?
- Using provisional restorations to predict results
- Open tray vs. closed tray impression technique
- Fixture vs abutment level impressions
- Bite registrations for distal extension cases
- Troubleshooting minimal inter-occlusal space issues
- Abutments: Ti, Gold Ti, Ti-base and Zirconia
- Delivering screw and cement-retained restorations
- Identifying unknown implants and ordering the correct parts
- Implant-retained fixed dental prostheses
- Dentures, Hybrids, Locators, All-on-4 options
- Filling the access hole with an invisible restoration
- Implant occlusion - what MUST you know
- Making an esthetic prototype in your office
- Esthetic (gingival contour preserving) impression techniques
- Managing the loose implant crown
- The hemi-engaging abutment bridge



# Gold Restorations: Cast and Foil

*with Optional Lab Day underneath*

Long considered the finest material for restorative dentistry, gold is often (unfortunately) omitted from treatment plans as a viable option in today's modern dental practice. This two-day course (with a third day optional to learn the lab phase) will focus on techniques to produce predictable precision gold castings, which both conserve and protect tooth structure. Special attention will be placed on preparation designs to maintain esthetics, simplify clinical and laboratory procedures and allow practitioners to provide restorations of the highest quality. Each participant will prepare several ideal cavity designs on the typodont and two natural teeth for actual castings, which will be fabricated by the Lab Day Participants on Saturday, ready to be seated, finished on Sunday. In addition to the castings, each participant will learn the fundamentals of direct filling gold (gold foil) and place class I gold foils into natural teeth.

## Topics

- Overview of cast gold
- Indications, advantages, diagnosis
- Esthetic considerations
- The basic technique: the class II inlay
- Preparation designs for intra- and extra-coronal restoration
- Conservation of tooth structure
- Block-out technique
- Impressions and temporization
- The Cleveland Smith Refractory Die Technique (on Lab Day)
- Cementation, finishing, and polishing
- Variations on the basic technique
- Techniques to increase retention and resistance
- Invisible onlays
- 7/8 crowns
- Direct filling gold in a modern practice
- Getting paid for excellence
- Practice management
- Insurance billing procedures



# DAILY SCHEDULE

7:30 AM — 8:00 AM

Registration and Breakfast

8:00 AM — 12:00 PM

Lecture, Live Demos & Hands-on Projects

12:00 PM — 1:00 PM

Lunch Break

1:00 PM — 5:00 PM

Live Demos & Hands-on Mentoring

---

## COURSE FEE INCLUDES

- Handpieces (loaned during course)
- Hand Instrument Cassette (loaned during course)
- All burs and supplies required
- Continental Breakfasts, Healthy Lunches
- Snacks and Beverages All-Day

## COURSE FEE DOES NOT INCLUDE

- Loupes (headlights available to purchase during course)
- Dinner
- Lodging

# CONTINUING EDUCATION CREDIT

## CONFLICT OF INTEREST STATEMENT

None of the faculty teaching at Stevenson Dental Solutions have any conflicts of interest to report. We never accept monetary support from any outside entity and all of our lecture materials, demonstrations and teaching materials are subject to approval from our CE Committee which upholds the best evidence and most appropriate approaches to knowledge dissemination.

Stevenson Dental Solutions, Inc. is an **ADA CERP Recognized Provider.**

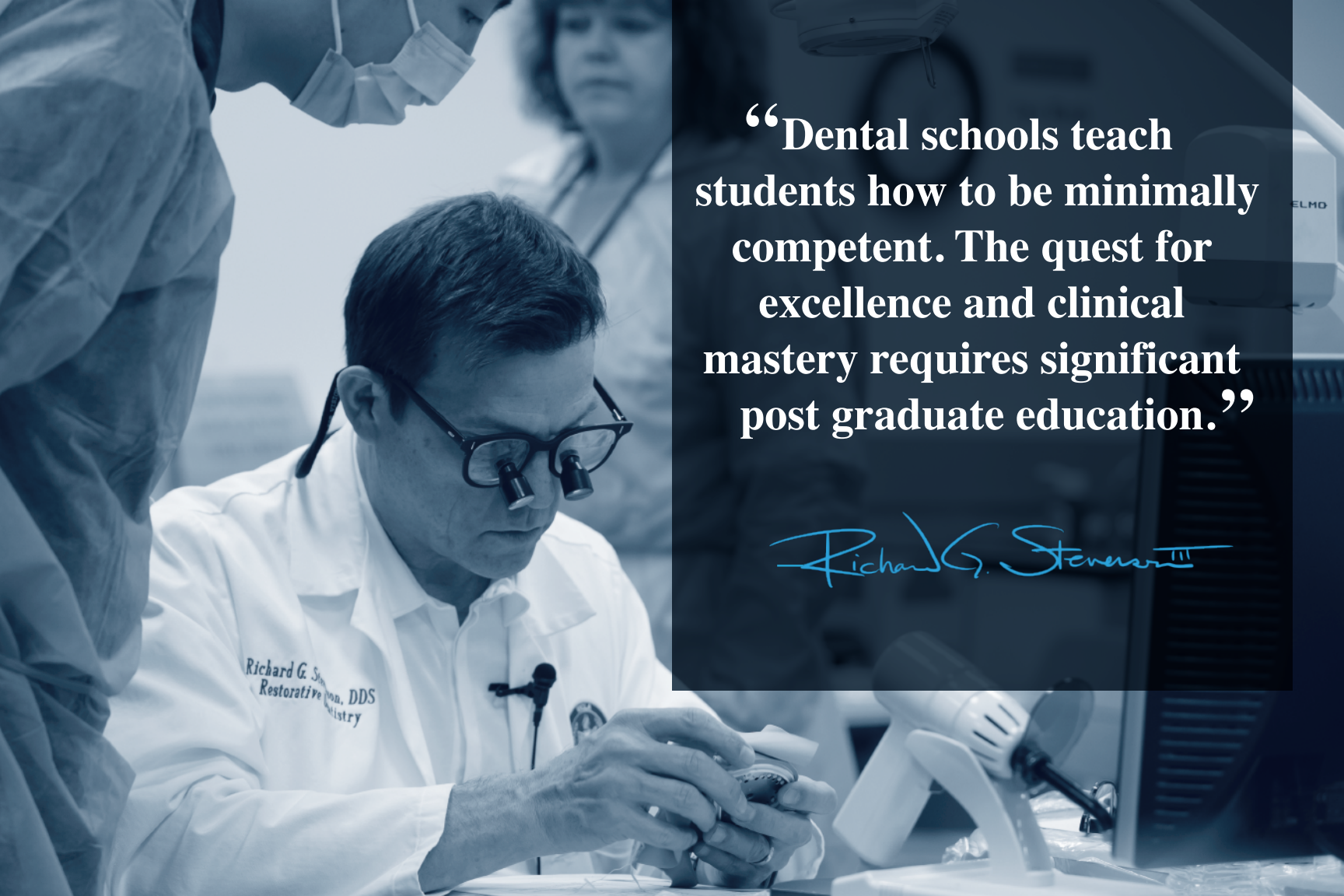
The 2-day courses offer 14 units of CE Credit.  
The 3-day courses offer 21 units of CE Credit.

All of our courses offer both California and ADA/CERP CE Credit.



ADA CERP is a service of the American Dental Association to assist dental professionals in identifying quality providers of continuing education. ADA CERP does not approve or endorse individual courses or instructors, nor does it imply acceptance of credit hours by boards of dentistry. Concerns or complaints about a CE provider may be directed to the provider or to the Commission for Continuing Education Provider Recognition at [ADA.org/CERP](http://ADA.org/CERP).





**“Dental schools teach students how to be minimally competent. The quest for excellence and clinical mastery requires significant post graduate education.”**

*Richard G. Stevenson III*

Richard G. Stevenson, DDS  
Restorative Dentistry



# MASTERPATH

Whether you join one class or complete them all, the power of intensive hands-on training will provide with the rare opportunity to truly take your dentistry to the next level. Excellence is not a destination but a journey of life long learning.

“ Dr. Stevenson is honestly one of the greatest mentors I have ever come across. While other people told me to be good enough, he inspired me to aim for excellence.”

★★★★★  
on Google review

“ Dr. Stevenson epitomizes what a true educator should be; knowledgeable, motivating and the ability to encourage you to bring the best out of your skills.”

★★★★★  
on Facebook review



# Custom Courses

We will travel to your location for all courses  
Group discounts offered

---

For more information  
please visit our website

[stevensondentalsolutions.com](http://stevensondentalsolutions.com)

For videos  
please visit our  YouTube channel

[Stevenson Dental Solutions](#)

Follow us on  Instagram

[@stevensondentalsolutions](#)

Email & Call

[info@stevensondentalsolutions.com](mailto:info@stevensondentalsolutions.com)  
(310) 868-1838

---

**Quaerimus  
Magisterium**

---

**Let us take you  
to the next level**

**RGS III**

[stevensdentalsolutions.com](http://stevensdentalsolutions.com)